

# 2-Wire Cable Tester

## 8740NAK/8740NK

### Specification

- Auto diagnosis and correction function
- 1024 test pins
- On-resistance, instance conduction, O/S, instance O/S, fast instance O/S.
- Safety test (AC Hipot/ DC Hipot/ IR / Leakage current)
- Component test (R/C/Diode)
- Support USB Host, RS-232, Remote, Print.

### Application

- Automobile harnesses
- Wire harnesses/connectors for consuming electronic products.
- Power application PCB/FPC multi points withstanding test.



### Accessories

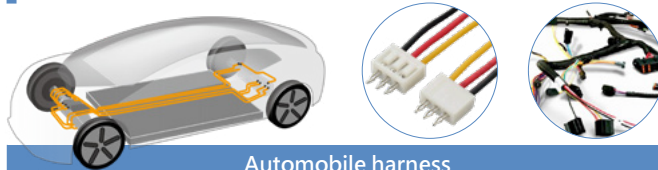
#### Standard

- Power Core
- 64P/3KV cable(AK-8600F3)
- Probe
- FX-000C16

#### Optional

- PC link
- Remote cable
- Calibration kit (KB-8750K1)
- Expansion box (F874001)
- Printer
- Networking fixture
- D-Sub Foot switch (F760001)

### Features



#### Automobile harness

Most of harnesses are made of copper. Several to dozen thin harness were covered by plastic insulating tube. They are soft and not easy to break. The normal cross-sectional area are 0.5, 0.75, 1.0, 1.5, 2.0, 2.5, 4.0, 6.0, There are all with different load current values for different power devices.

#### Example

Specification	Application
0.5	Dashboard light, side light, door light
0.75	Plate light
1.0	Fog light, indicator
1.5	Head light, horn
2.5-4	Main power cable, Generator cable

#### Common production defect

Insulation layer or dislocation might happen during manufacturing process. That may cause poor connection or insulation.

#### Electrical Inspection

Conductivity Test	Detect the contact resistance problem on the terminal.
Hipot Test	Detect the circuit contact fit the insulation value.
Resistance Test	Detect the O/S problem on the contact point of the terminal.

TEST	TestTime: 0.108Sec	ITEM SEL. Filter:1	PRNG
TEST:1	PASS:1	FAIL:0	
<b>PASS</b>			
Extract the Cable			
		ITEM	TEST
		(1) OPEN SHORT	✓
		(2) CONDUCTANCE	✓
		(3) COMPONENT	✓
		(4) AC HIPOT	✓
		(5) DC INSUL. ALPDT	✓
		(6) Q. CONDUCTANCE	✓
		(7) INTERMITTENCE O/S	✓
		(8) Q. INTERMITT. OPEN	✗

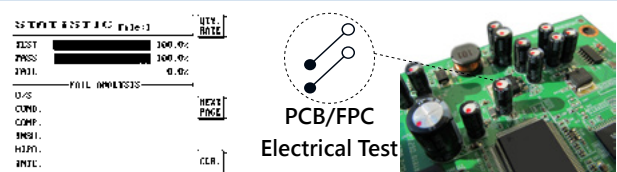
#### A. Auto learning/Conductivity/Hipot/Component Test

##### O/S Test

Detect the harnesses/ connectors in the circuit which should connect but doesn't, or opposite.

##### Hipot Test

Apply a stable high voltage and test the insulation or any leakage happen.



#### B. Calculation Function

8740NAK offer result calculation which can show the number of pass/fail and the reason caused.

## Specification

Model Name	8740NAK	8740NK	
AC Hipot	100-700V	-	
DC Hipot	50-1000V	50-1000V	
Technology	2-Wire		
Test pins	1024		
Hipot output accuracy	±5%		
Hipot test accuracy	±5%		
Rate output	5Vdc		
Hipot test time	0.01s		
Cable spec. request	Max. capacitance 5uF		
Test items and range	Cond. Resistance	100mΩ-52Ω	
	Intermittence Cond. Resistance	100mΩ-52Ω	
	AC withstanding voltage leakage current	0.01mA -5mA	1*
	AC arching detect		
	DC withstanding voltage leakage current	0.1uA-1000uA	2*
	DC arching detect		
	DC withstanding voltage insulation resistance	1MΩ-1GΩ	
	O/S/Instant O/S/Fast instant short	1kΩ-100kΩ	
	Support O/S point inspection	●	
	Single side test	●	
	Resistance	Range	100mΩ-2MΩ
		Signal Level	Rated 2.4V
	Conductance	Current signal	35mA
Capacitance	Range	10pF-3uF	
	Frequency signal	AUTO (Rated) 48Hz/ 480Hz/ 4.8kHz/ 48kHz	
	Level	Rated 1.2V	
Diode test	Range	0-7V	
Advance function	Programmable continuous test/ auto search/ auto diagnose		
Scanning mode	Auto/ Manual/ External		
Memory	Max. 500 sets		
Dashboard	System/ Fast/ Edit/ Function key		
Indicator	Pass/Fail (LED) / Red/ Green light/ Display/ Sound		

1\*(Must do correction before test when spec. is lower than 0.1mA)

2\*(Please read the manual carefully before doing this test)

Power	Fix voltage 115/230 Vac ±10% Freq. 60/50Hz
Power consuming	250VA
Interface	RS-232, USB Host, Print, Remote
Launch mode	Manual, Auto, Remote Control
Display	320*240
Operation Environment	Temperature : 15°C-35°C Humidity : RH <sub>≤</sub> 70%
Dimension(W*H*D)	435×270×360mm
Weight	18kg