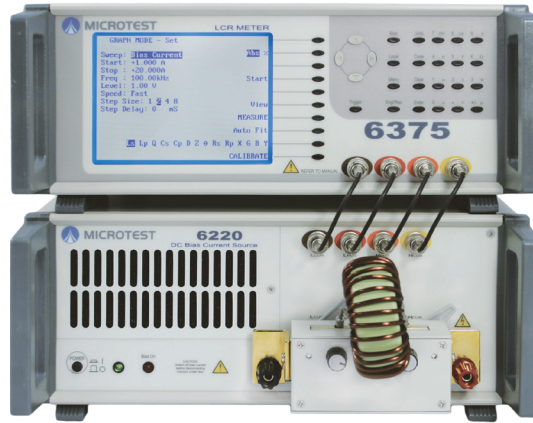


1  
Component  
Tester

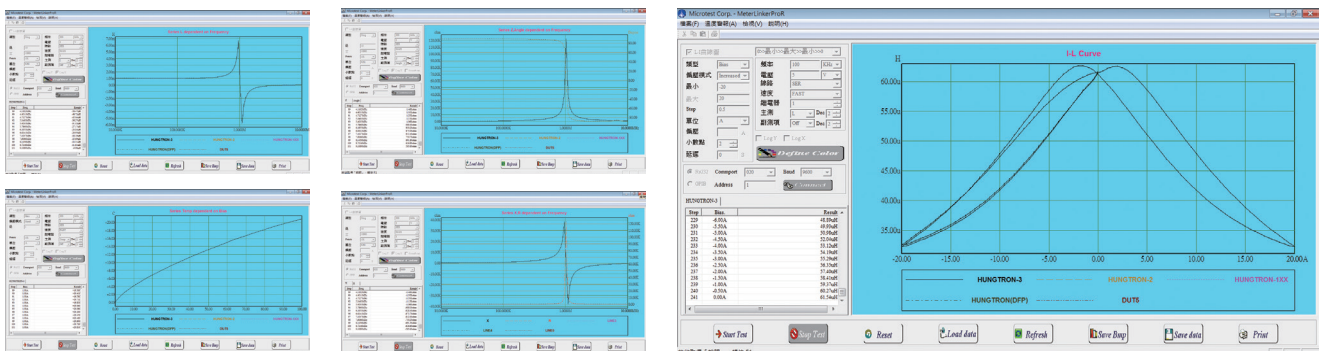
# DC Bias Current Source

6210/6220/6240



Key Feature

- Current and frequency graphic scanning analysis
- Temperature-rising scan function - solve the problems of overheating a DUT to burn
- DCR Measurement function
- Long-term consecutive maximum power output
- Interchangeable bi-direction current function
- Scalable current output up to 60A / 120A / 320A (6210 / 6220 / 6240)
- Innovative strengthen protection device
- Auto-adjust maximum voltage output according to current output
- Direct Handler interfaces control through LCR power meter
- 6120/6220 can be overlapping 6 sets, 6240 can be overlapping 8 sets



## Specification

DC Bias Model	6210	6220	6240
Output Current	0.000A - 10.000A	0.000A - 20.000A	0.000A - 40.000A
Accuracy	0.000A - 1.000A 1%+5mA		
	1.001A - 5.000A 2%		
	5.001A - 20.000A 3%		
Frequency	20Hz - 3MHz		
Power Consumption	320W max.		640W max.

## LCR Meter with DC Bias

LCR Meter Model	6375	6376	6377	6378	6379	6577
Meter Mode	●	●	●	●	●	●
LCR Frequency (Hz)	200k	500k	1M	5M	10M	1M
DC Bias Model	6210 / 6220					6240
DC Bias Freq. (Hz)	200k	500k	1M	3M	3M	1M
Output Current (Max.)	60AMP / 120AMP					320AMP
Constant Power Output	●	●	●	●	●	●
Current Switch	●	●	●	●	●	●
DC Resistance	●	●	●	●	●	●
Graphic Mode	-	-	●	●	●	●
Temperature Analysis	●	●	●	●	●	●

## General

Power Supply	Voltage	88-264Vac
	Frequency	47-63Hz
Interface	RS-232、Handler (option)	
Operation	Auto、Manual、RS-232、GPIB (option)	
Environment	Temperature : 10 ~ 40°C、Humidity : 20 ~ 90%RH	
Dimension W*H*D	337x145x522 mm	
Weight	6210/6220-15 Kg、6240-20 Kg	